



“NOTHING ABOUT US, WITHOUT US”
POSITIONING RURAL (REGIONAL) SUSTAINABILITY TRANSITIONS IN A CANADIAN CONTEXT

Brady Reid ([🐦@bradytreid](https://twitter.com/bradytreid)) – PhD Candidate – University of Waterloo

VISUALIZATION ACTIVITY





THE KEY MESSAGE...

For effective transitions to a more sustainable society in rural Canada, there is *no way forward* without working effectively and meaningfully with Indigenous peoples *on their terms*

IN THE NEXT TWENTY MINUTES I WILL...

- Position myself and set context
- Explore the project at hand
- Share ideas moving forward



POSITIONALITY



Settler scholar

PhD student
researcher

Newfoundlander

indigenous community

sustainability management strategy

field of sustainability

indigenous people

indigenous regional development

level collaborative governance

regional governance

indigenous knowledge system

indigenous rights

pike et al

hall et al

regional development

ethical space

indigenous scholarship

global environmental change

sustainability management

reed et al

sustainability transition

akimowicz et al

wilson et al

SETTING THE CONTEXT



Problem?

- Society operating “unsustainably,” with diverse rural areas facing challenges due to climate change, government pull-back, etc.




Approach?

- Researchers attempting to design, implement, and measure “transitions” to a *more* sustainable world



Gap?

- Inadequate inclusion of diverse perspectives and knowledge systems in **sustainability transitions**

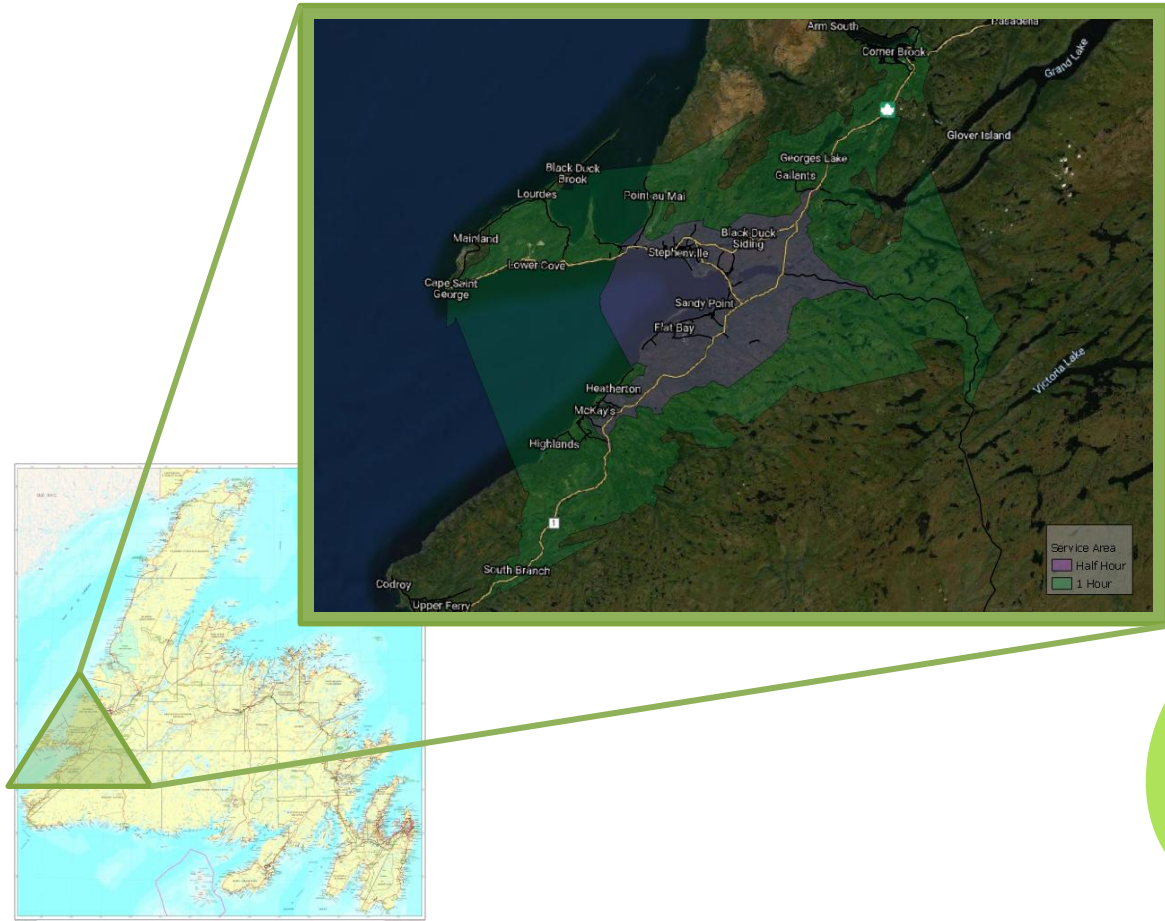


The transformative potential for academia in welcoming diverse knowledges is significant, but what does this 'welcoming' mean and at what cost to Indigenous peoples?"

Margaret Kovach, 2021, p. 11

THE CURRENT (FUTURE) PROJECT

What opportunities and barriers exist in the Bay St. George region of western Newfoundland for a transition (transformation) to a more sustainable, self-determined future?



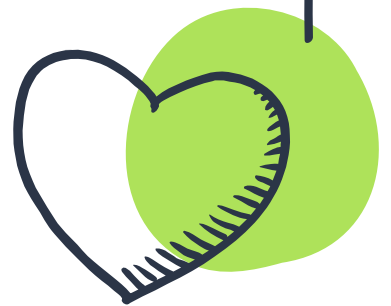


BUT HOW?



REGIONAL GOVERNANCE

- X Who plays a role in collective decision-making on matters that impact the region (and what amount of power does each player hold in the decision-making process)?
- X How does existing government (local, regional, provincial, federal, or international) policy and structure hinder or drive decision-making in the region?
- X How does the decision-making in the region reflect the priorities and rights afforded to communities and individuals?



ETHICAL SPACE

The analogy of a space between two entities, as a space between the Indigenous and Western thought worlds

Ermine, 2007

A S S U M P T I O N S

W O R L D V I E W S

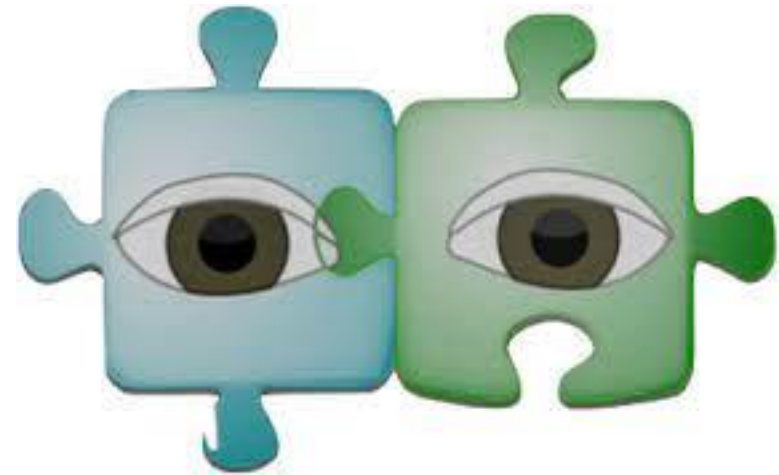
B I A S E S

P R I O R I T I E S

ETUAPTUMUK

A Mi'kmaw guiding principle for research that draws value on the equitable coming-together of both western and Indigenous knowledge systems

Bartlett et al., 2012





Thank you!