

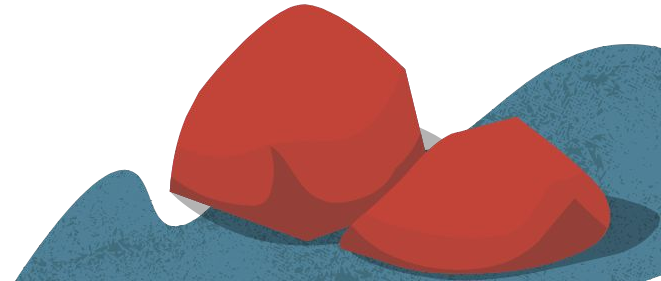


How the housing crisis has affected international students living on Prince Edward Island

Kelly Rivera

Master's Degree Candidate
for the **MAIS** program

In collaboration with
the Cooper Institute



Introduction

- The housing crisis on Prince Edward Island.
- International students' financial obligations.
- The estimated results of this project.



Review of Related Literature

- International Students' Wellbeing.
- Tuition costs for International Students.
- **UTILE:** Unité de travail pour l'implantation de logement étudiant.



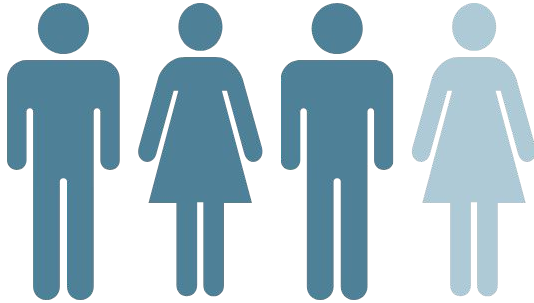
Methodology

- **Qualitative phenomenological approach:** descriptive case study.
- Researcher as a **classmate/ international student.**
- **Data and methods of data collection:** interviews and document analysis.

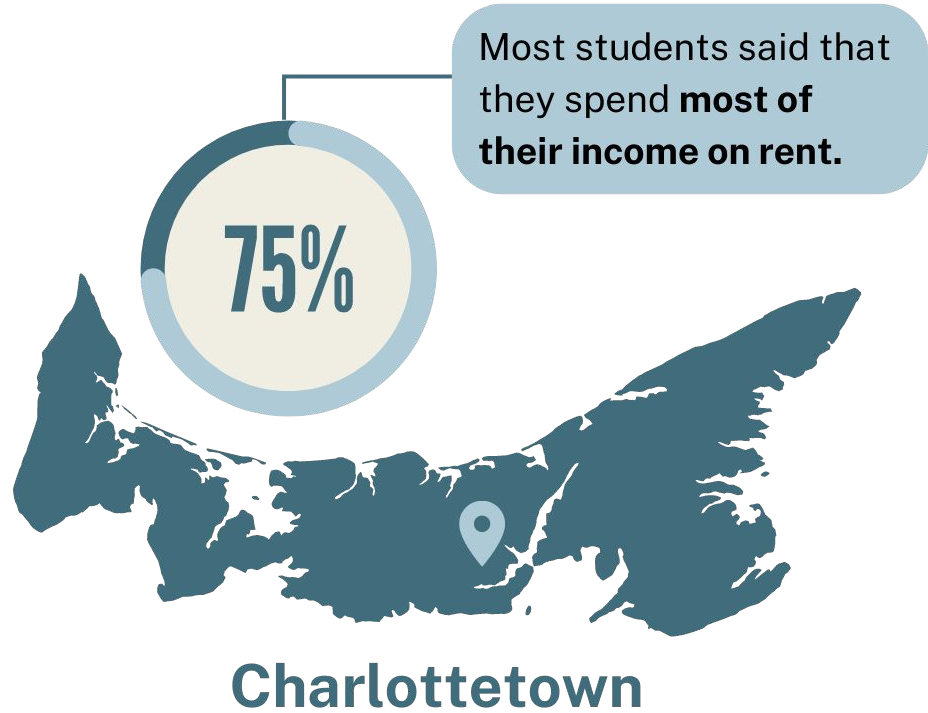


Results

3 out of 4 students



- **Moved out** of their place after one month of renting.
- **Felt unsafe** in their first accommodation.



Recommendations

- Improve current policies and regulations.
- Increase investment in student accommodations and social housing.
- Create awareness in our communities.

