

SUPPORTING INDIGENOUS PROSPERITY

PRESENTATION TO NADF BOARD OF DIRECTORS

CHARLES CIRTWILL, PRESIDENT & CEO
25 JUNE 2025



About Northern Policy Institute

Northern Policy Institute is Northern Ontario's **independent, evidence-driven** think tank.

We develop good public policy **for and from Northern Ontario**.

Three Areas of Focus

1. Know the North
2. Grow the North
3. Develop Tools for Communities
 - (Making it easier for them to know and grow the north)

NOT a Government Agency Nor Are we Funded by Government

Northern Policy Institute is a **federally registered charity for educational purposes.**

We have **no operating or base grant** from any entity – public or private.

Every **dollar we spend we have to raise, fresh**, every year.

Our work, literally, **would not be possible without our partners** and community supporters.

We very much appreciate the partnership and support of the Nishnawbe Aski Development Fund and the invitation to join you today.

Indigenous Policy



NORTHERN
POLICY INSTITUTE | INSTITUT DES POLITIQUES
DU NORD

Report No. 6 | September 2015

A Strategy for Change

Supporting Teachers and Improving First Nations, Métis, and Inuit School Success in Provincially Funded Northwestern Ontario Schools

By John A. Haddon and Julian Kitchen

northernpolicy.ca

2014 – **Our very first paper** - First Nations Control of First Nations Education

Exploring the need for an “Anishnawbe Business Professional Association”

2017 – Indigenous Economic Development Network Strategic Framework

- Jamie McIntyre's given name is Mashkiki Kwe, and she belongs to makwa doodem (bear clan). She has a mixed background of settler Scottish and Anishinaabe from Batchewana First Nation.

Labour Market Trends

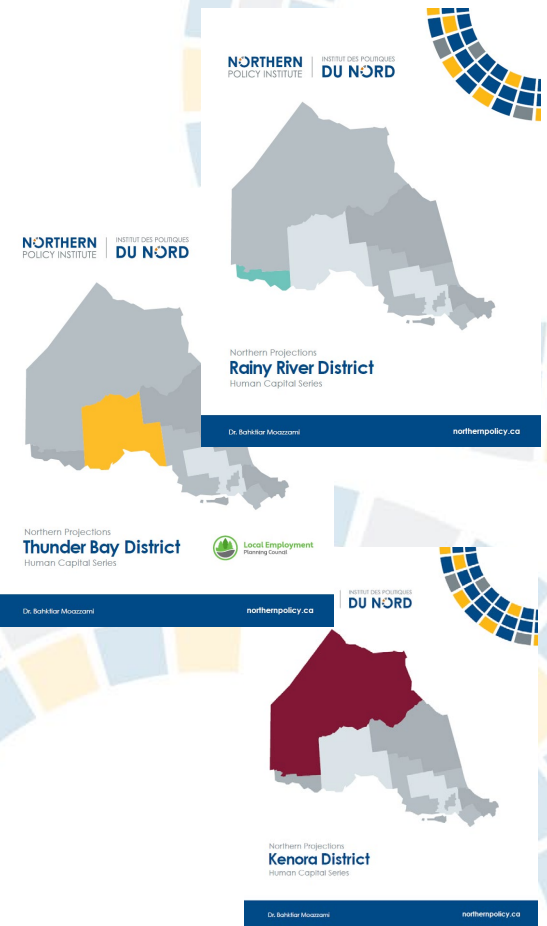
2019

The projections indicate a need to promote and improve education among Indigenous peoples.

For example, 60 per cent of Indigenous men and 57.3 per cent of Indigenous women in the Kenora District are participating in the labour market, and less than half are employed.

In the Thunder Bay District, Indigenous people have lower educational levels when comparing to the average for Indigenous people in Ontario.

NOTE – in Northeastern Ontario education, employment, and income for Indigenous people are, in most cases, better than the provincial average for First Nation populations



NOTE - The *Human Capital Series* is **due to be updated in 2026**

Economic Development (and Nation Rebuilding - 2022)



By: Charles Cirtwill, Dr. Ken Coates, Rachel Rizzuto, Mateo Orrantia, Mercedes Labelle and Larissa Yantha



Service Delivery in Remote Communities

2023 - Northern Ontario Transportation Task Force

2024 - Time to Grow A Regional Economic Plan for
Northwestern Ontario 2025-2035 (NOMA)

Priorities in BOTH Documents:

- Remote Airfield extensions
 - Firefighting, economic growth, increased services
- 2 plus 1 roads to replace existing all-season
- All season to replace – where possible – winter roads
- WORLD LEADING internet (not 50-10, minimum of 100-30)

NOTE – Transportation research
underway right now – would love to
have NADF input – publication
winter-spring 2025-2026

Tools You Might Use - 2

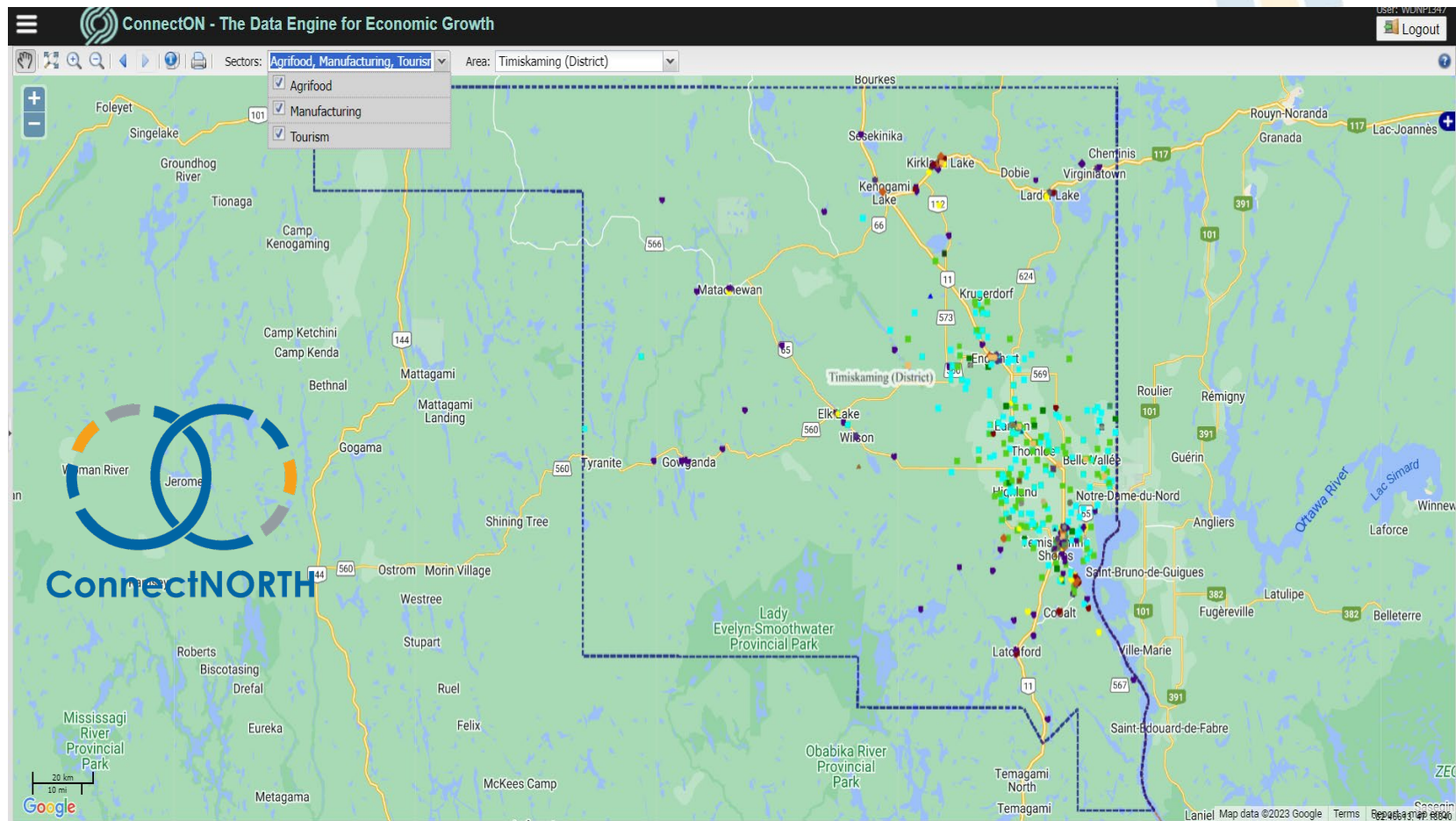
Northern Policy Institute is consortium lead for access to statistical data in Northern Ontario through the Community Data Program. This group purchase plan **reduces the cost for data** users to beyond that which is released free by providers like Statistics Canada.

Tools You Might Use - 1

<https://www.northernpolicy.ca/nodc>



Tools You Might Use - 3



<https://www.northernpolicy.ca/connectnorth>

Tools You Might Use - 4



- Membership group
 - municipalities, charities, chambers, and others
- Merging our collective resources
- The smallest municipality or local charity can access high-end skills
- The expert's salary and benefits are covered in part by NPI/IPN and our sponsors
- And, in part, through the membership fees paid by participating organizations
- The result is members can secure the skills they need when needed

One Final Opportunity

STATE OF THE
NORTH



L'ÉTAT DU
NORD

Each year, Northern Policy Institute provides an update on the state of Ontario's northern regions. We use a set of environmental, social, and economic indicators that are selected in partnership with our regional partners. Report Card is shared at a major event (2026 in Toronto) plus a series of online and regional events, and is distributed to key community leaders (federal, provincial, FNMI, municipal) in hard copy.

Get Involved – Community Profile – 2 pages in the report card dedicated to your sector, community, or industry.
2025 partners: Destination Northern Ontario (farming),
Northern Ontario Farm Innovation Alliance (agrifood)

Thank you. Marsee. Ραυλ^νδΓΝ^ρ
Merci. Miigwech.

info@northernpolicy.ca
www.northernpolicy.ca



/NorthernPolicy