

**NORTHERN**  
POLICY INSTITUTE

INSTITUT DES POLITIQUES  
**DU NORD**

# SSM WHITE PAPER PRELIMINARY RESULTS

RACHEL RIZZUTO  
MARCH 9  
ATIKOKAN, ONTARIO



# What is Northern Policy Institute?

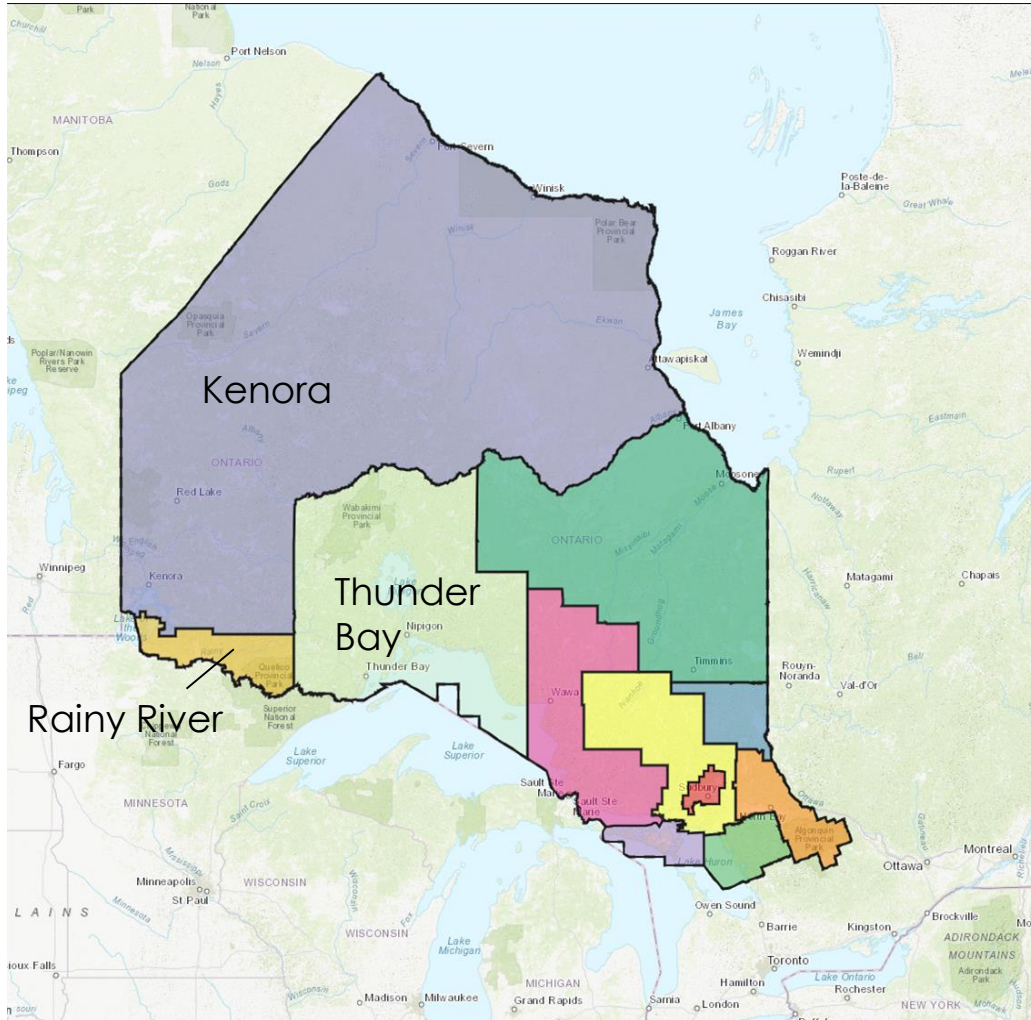
Northern Policy Institute is a **think tank** that conducts **independent** policy work, to provide **evidence-based solutions** to sustain and grow Northern Ontario.

- **Independent** – authors are free from interference from everyone, including us
- **Non-partisan** – we do not take “sides”
- **Evidence based** – we collect, measure and interpret data
- **IN the North** – we deal with local, regional, provincial, national and international issues from a northern perspective

# Four Key Themes from Sioux Lookout Discussion

- Lack of system supports
- System design and diversity of service population
- Geographic distance and service delivery
- Digital delivery is unrealistic at present in Northwestern Ontario

# Northwestern Ontario

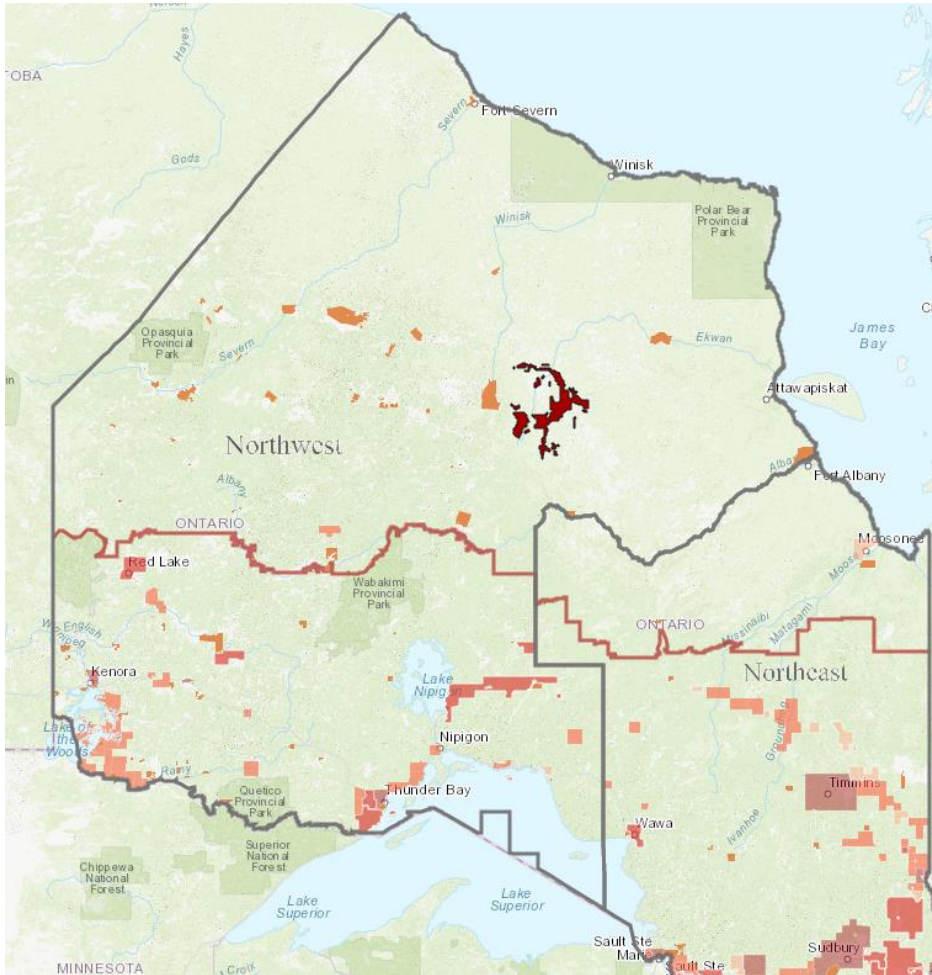


Northern Policy Institute Boundary Map

- Northwestern Ontario is responsible for nearly 60% of Northern Ontario's total land area
- Northwestern Ontario has:
  - 81 First Nations Communities\*
    - 10 First Nations Tribal Councils
    - 3 Provincial Territorial Organizations
    - 3 Métis Nation of Ontario Regions
  - 34 Municipalities
    - Kenora and Thunder Bay are the main Northwestern Ontario hubs.

Source: Statistics Canada 2016; Chiefs of Ontario 'Shared Definitions'; Canada 2019 List of Tribal Councils; Association of Municipalities of Ontario; Métis Nation of Ontario 2019; Assembly of First Nations; First Nations Map  
Note: This is based on two types of CSDs: IRLs and S-E or Indian reserve and Indian settlement.

# Northwestern Ontario

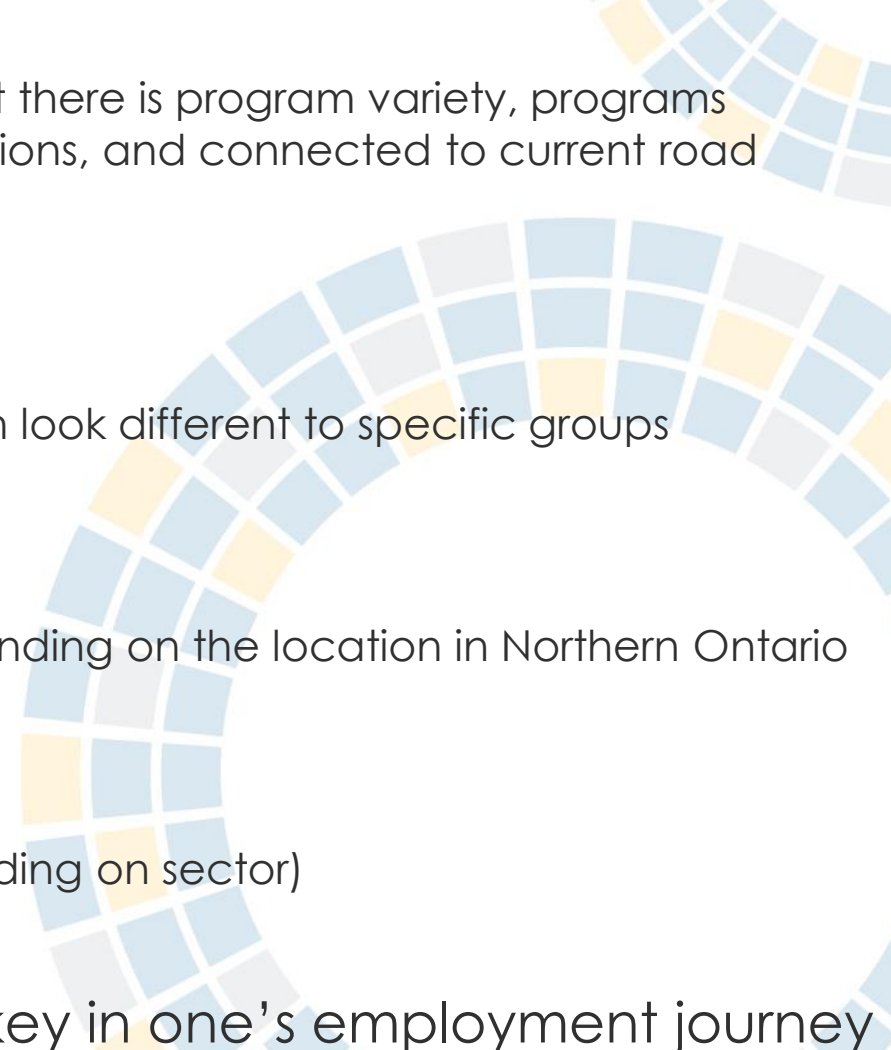


Northern Policy Institute Infrastructure Map

- The cities of Kenora and Thunder Bay contain more than 52% of the population in the Northwest
- The four next largest communities in this region make up the next 16.7%
- The remaining 30% of the population (roughly 72,300 people) are spread across 100 communities, each with a population of less than 5,000
- More than half of all communities in Northwestern Ontario (58) have fewer than 500 people

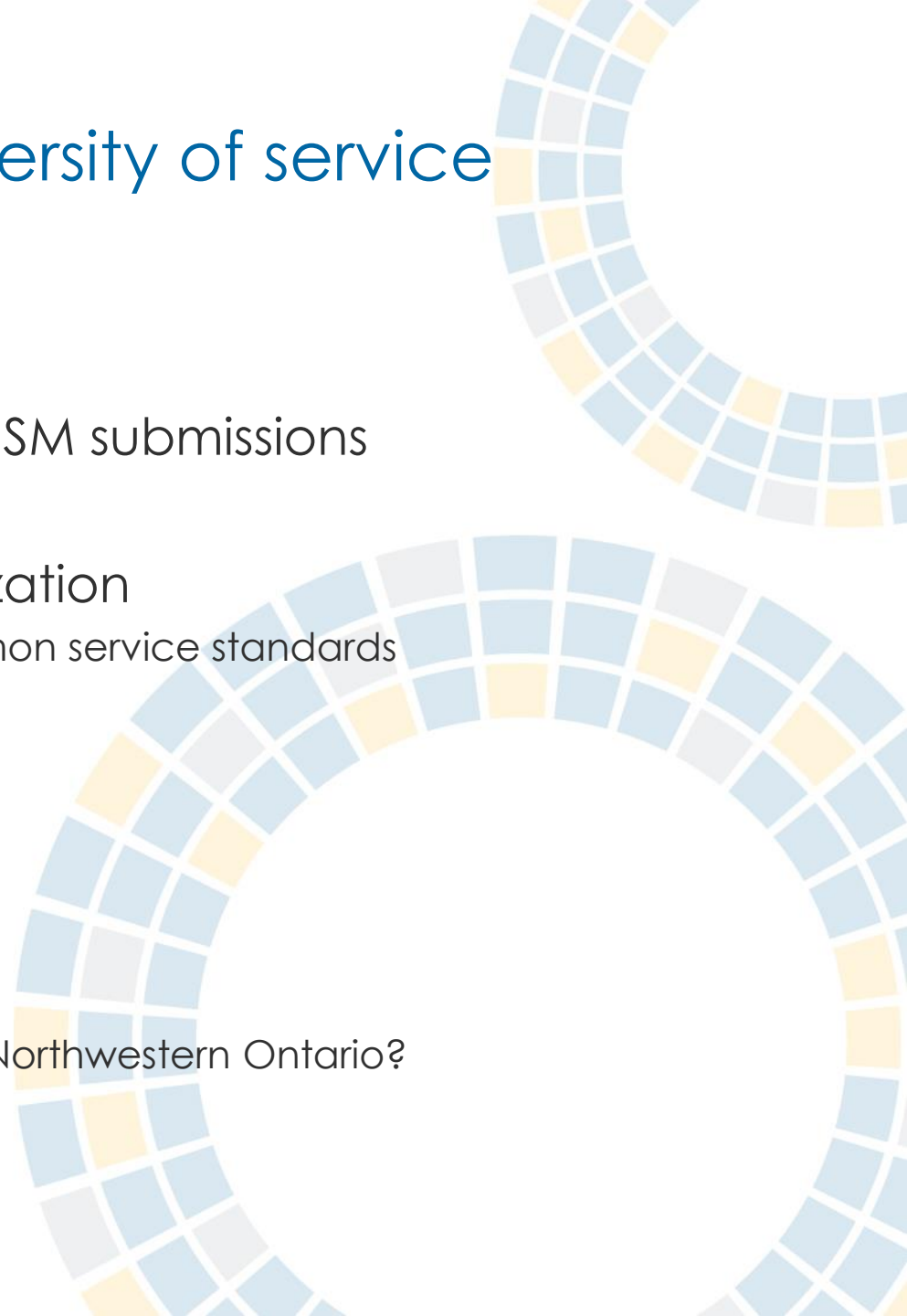
Source: Statistics Canada, Census Profile, 2016 Census. Author Calculations

# Lack of system supports

- Childcare
    - Limitation in service language but there is program variety, programs provided by a range of organizations, and connected to current road infrastructure
  - Transportation
    - Commonly noted barrier, but can look different to specific groups
  - Housing
    - Availability can be an issue depending on the location in Northern Ontario
  - Other Factors
    - Health and lack of talent (depending on sector)
  - Wrap-around supports are key in one's employment journey
- 

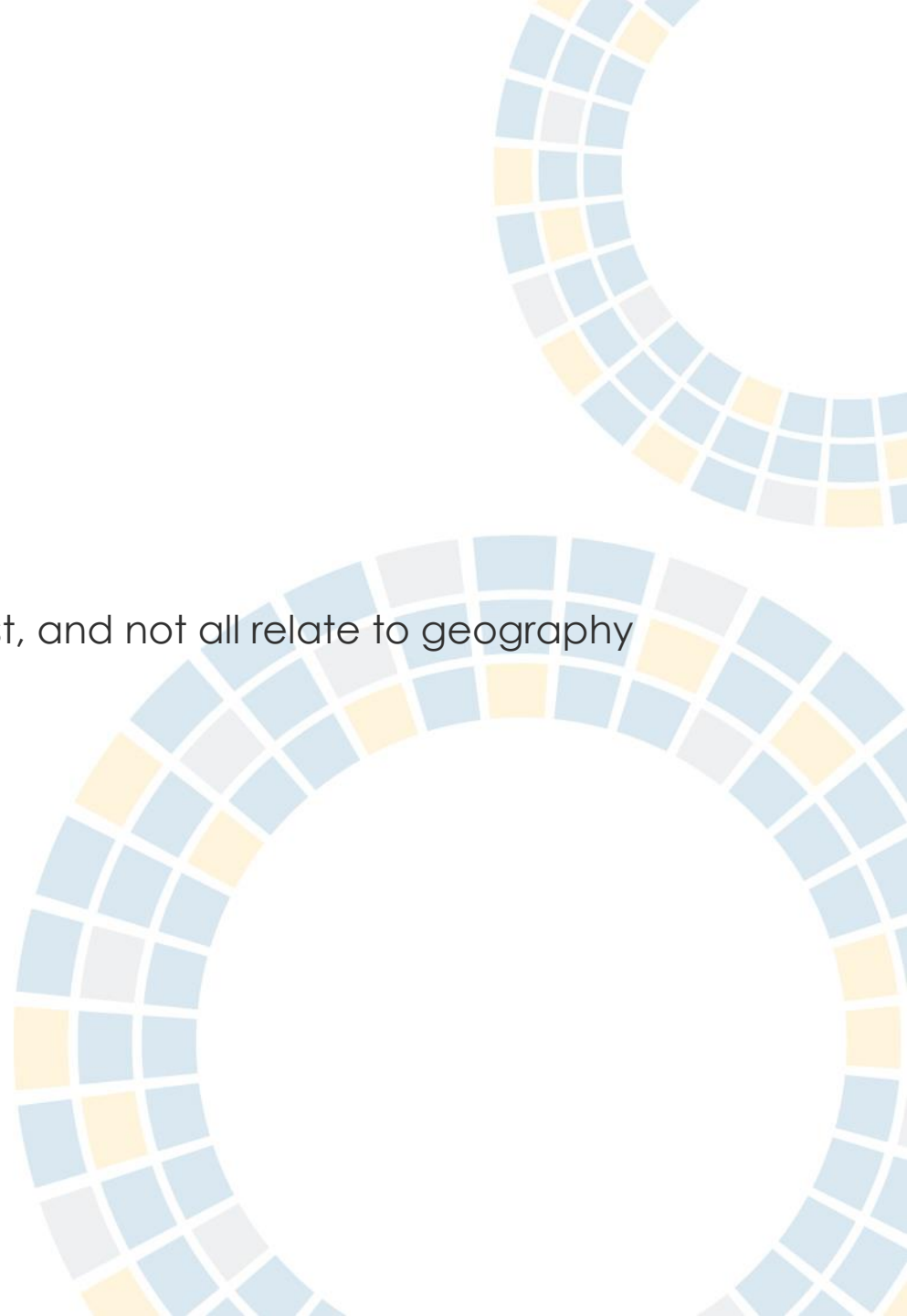
# System design and diversity of service population

- 5 types of models from the SSM submissions
- Centralization vs decentralization
  - Flexibility and innovation vs common service standards
- Tracking
  - Interpretation issues?
- Collaboration
  - What do relationships look like in Northwestern Ontario?



# Geographic distance

- Defining boundaries
  - Where do clients live?
- Costs
  - Multiple factors can influence cost, and not all relate to geography
- Reliability
- To keep in mind
  - Digital delivery channels
  - Appropriate benchmarking
  - Merging complementary services



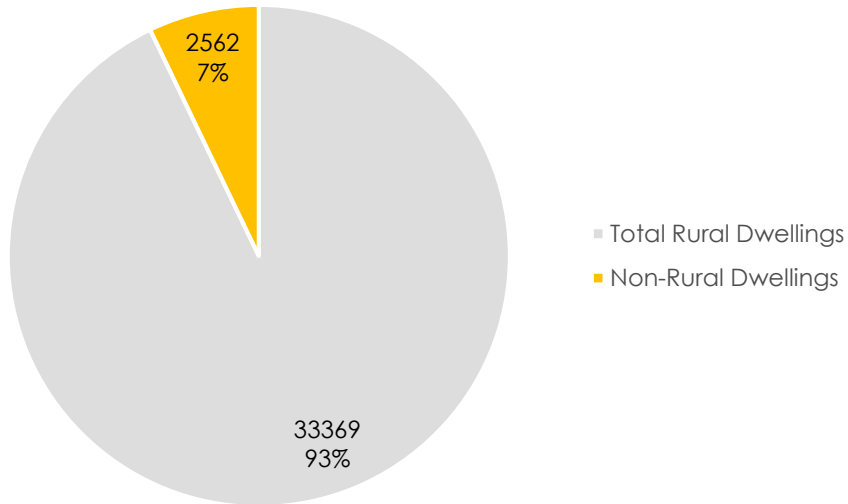


# Digital delivery is unrealistic at present in Northwestern Ontario

- Current state of affairs
  - Infrastructure is there, but not is not where it should be; gaps exist
- Digital literacy
- Examples of networks
  - Contact North
  - Keewaytinook Internet High School
  - K-Net
  - Western James Bay Telecom Network
  - Innovation network – several organizations

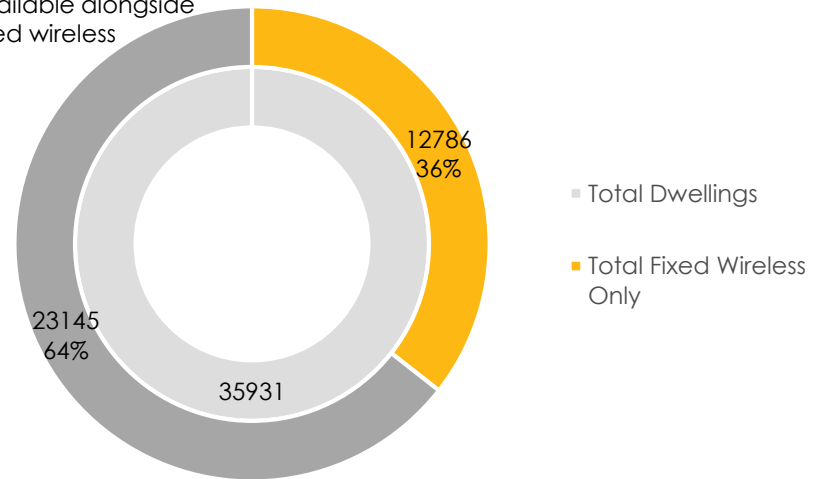
# Digital delivery: 50/10 mbps

## Total NWO without 50/10 Mbps by Population Classification



## Total Dwellings without 50/10 Mbps Internet, NWO

No 50/10 speed but other connections available alongside fixed wireless



**NORTHERN**  
POLICY INSTITUTE

INSTITUT DES POLITIQUES  
**DU NORD**

Thank you. Marsee. Paa'dΓN³  
Merci. Miigwech.

1 (807) 343-8956 | [info@northernpolicy.ca](mailto:info@northernpolicy.ca)

[www.northernpolicy.ca](http://www.northernpolicy.ca)



[/NorthernPolicy](#)