

NORTHERN
POLICY INSTITUTE

INSTITUT DES POLITIQUES
DU NORD

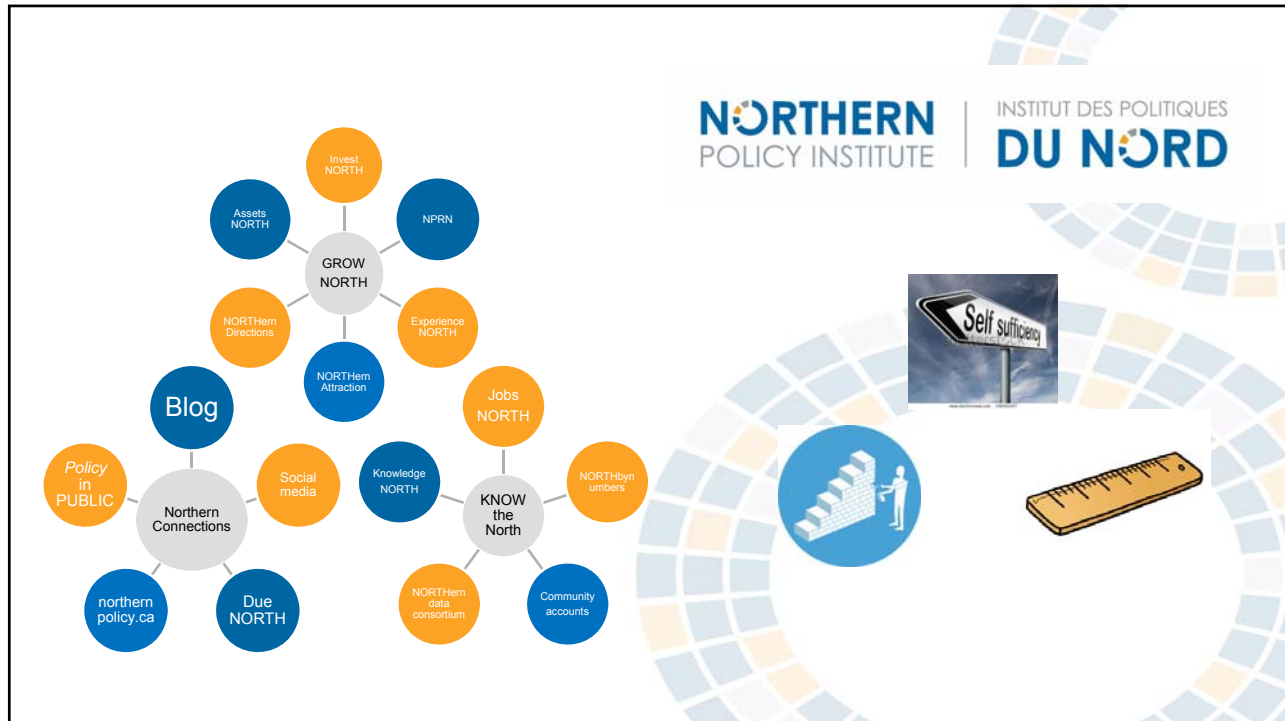
NPI – OPPORTUNITIES FOR COOPERATION & COLLABORATION

MNDM

13 JUNE 2016, SUDBURY

Overview

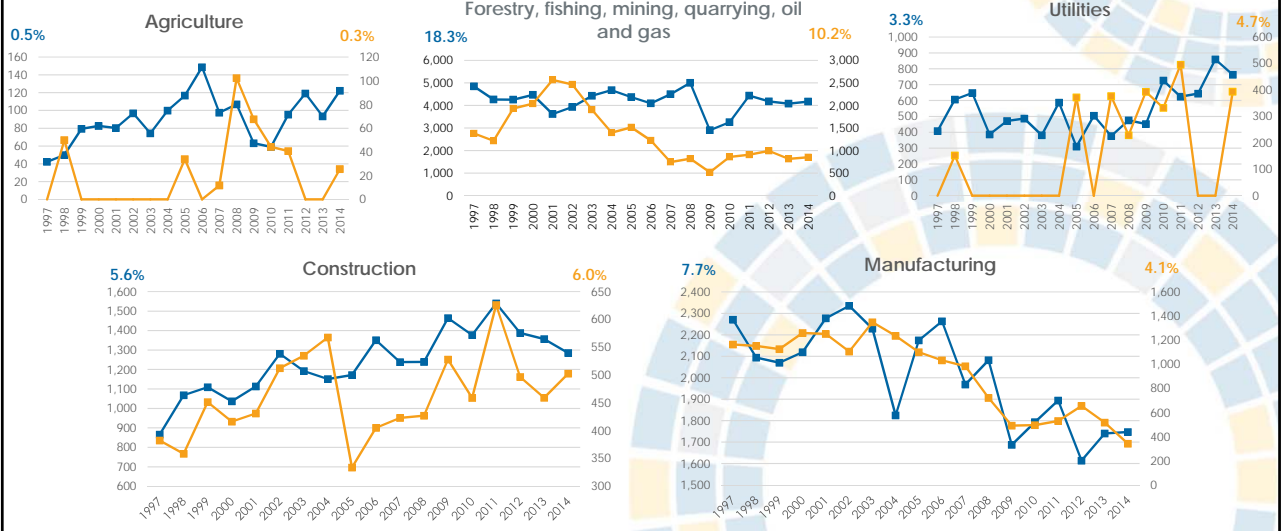
- NPI Update
- Key Indicators of Growth
- Sample Findings so Far
- Consistent Primary Data Collection
- Expanding Secondary Data Access
- Enhancing Data Usage
- Summary of Partnering Opportunities



Key Indicators of Growth

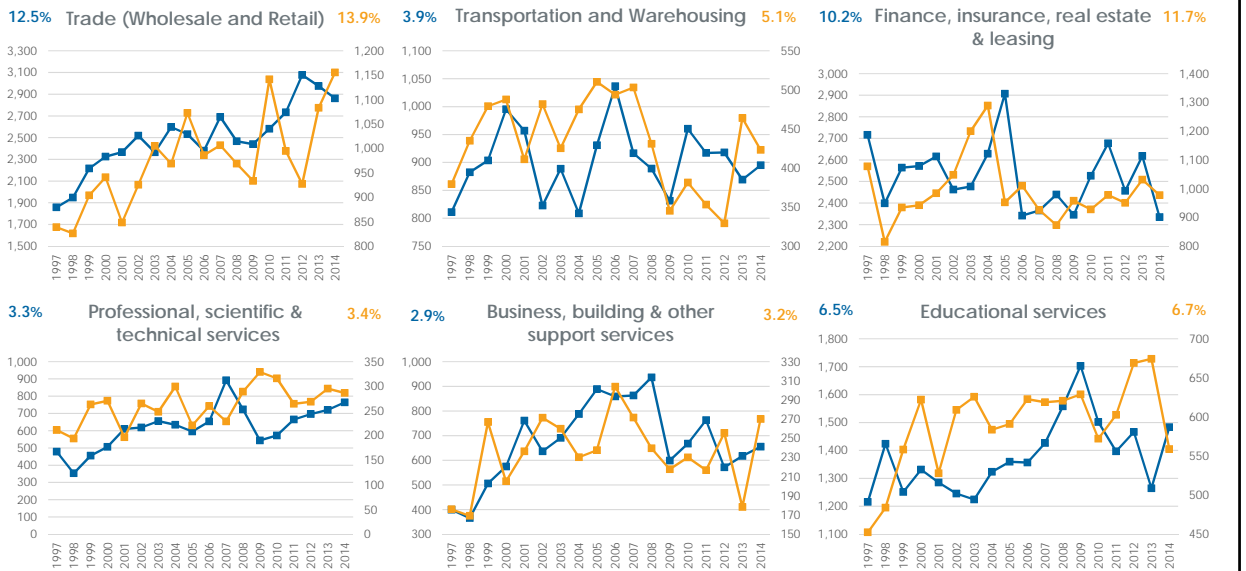
- **Communities**
 - Volunteerism, housing stock, poverty, capacity
- **Demographics**
 - Human capital, health, education, population (immigration, replacement, engagement)
- **Economy:**
 - GDP, employment, income, private investment
- **Environment**
 - Size of green economy, water and air quality, investments in R&D and conservation
- **Indigenous**
 - Category or lens? All of the above, plus: respect, collaboration and shared decision making
- **Infrastructure**
 - Age, quantity, quality, impact (build and operate)

GDP by goods-producing industry (chained 2007 dollars x1,000,000)



Source: Author's calculations based on Statistics Canada, CANSIM database, tables 282-0125 and 379-0030.

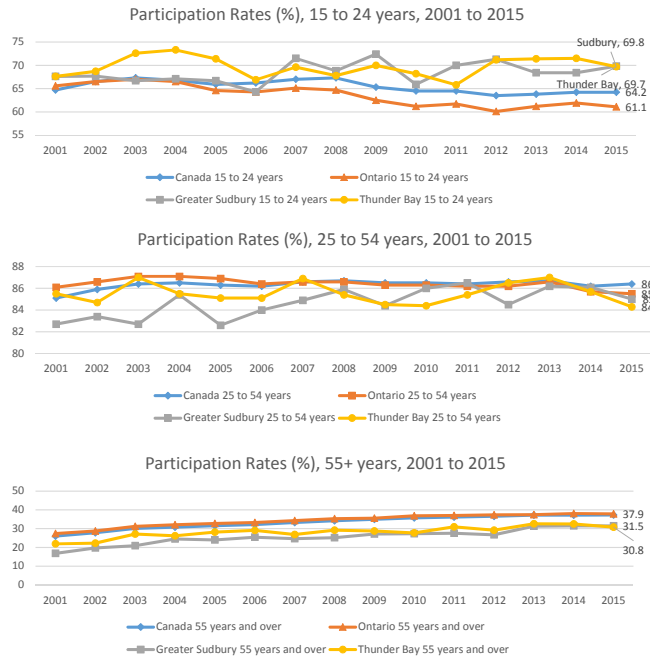
GDP by services-producing industry



Source: Author's calculations based on Statistics Canada, CANSIM database, tables 282-0125 and 379-0030.

Northern Ontario's youth are economically involved

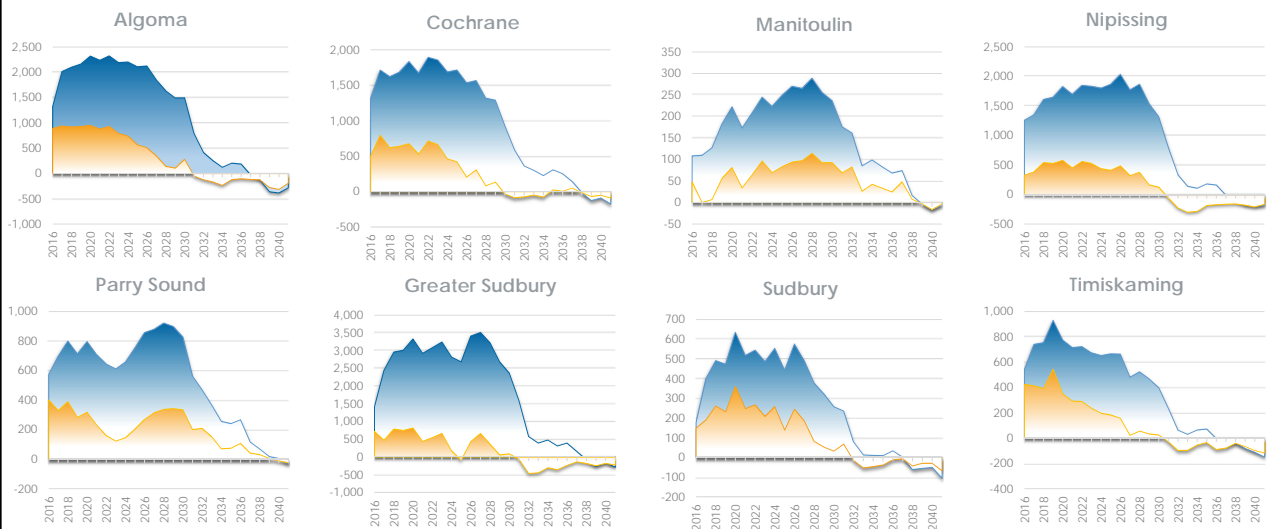
1. 15-24
 - Consistently above Ontario and Canada
2. 25-54
 - Consistently below
3. 55+
 - Roughly equal participation



Northeast – migration targets

Target 1 = to hold dependency ratio at current level (i.e. just shy of .5 for Thunder Bay as of 2015, see slide 14)
 Target 2 = allowing dependency ratio to rise to match the provincial rate by 2041 (i.e. just shy of .7, see slide 14)

■ Annual Net Migration, Target 1
 ■ Annual Net Migration, Target 2

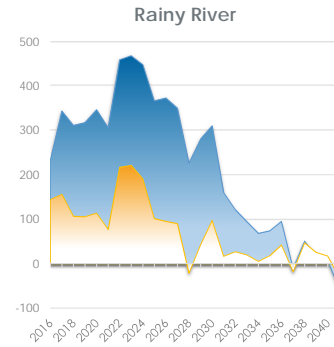
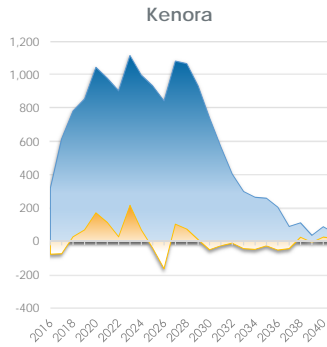
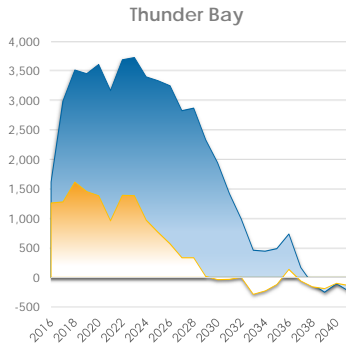


Source: Author's calculations based on Ontario, Ministry of Finance, "Ontario Population Projections, 2013-2041" (Toronto, 2014).

Northwest – migration targets

Target 1 = to hold dependency ratio at current level (i.e. just shy of .5 for Thunder Bay as of 2015, see slide 14)
 Target 2 = allowing dependency ratio to rise to match the provincial rate by 2041 (i.e. just shy of .7, see slide 14)

■ Annual Net Migration, Target 1
 ■ Annual Net Migration, Target 2



Source: Author's calculations based on Ontario, Ministry of Finance, "Ontario Population Projections, 2013-2041" (Toronto, 2014).

Will there be jobs?

- Aging population isn't all bad
- Replacement demand represents job openings from retirements
- Expansion demand represents economic growth in the industry
- A lot more work to be done
- Align current and future labour supply and demand

The key is to align job seekers (i.e., graduates) with job openings

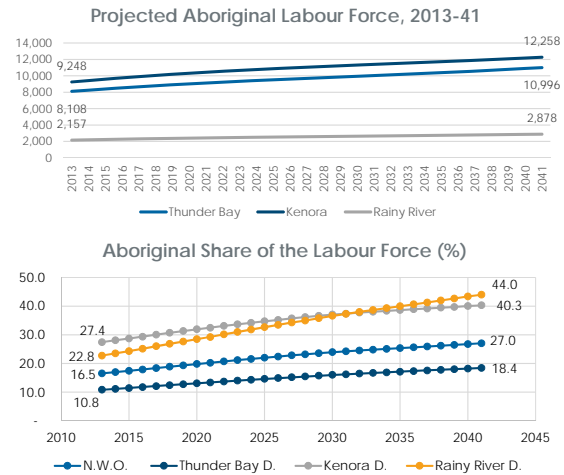
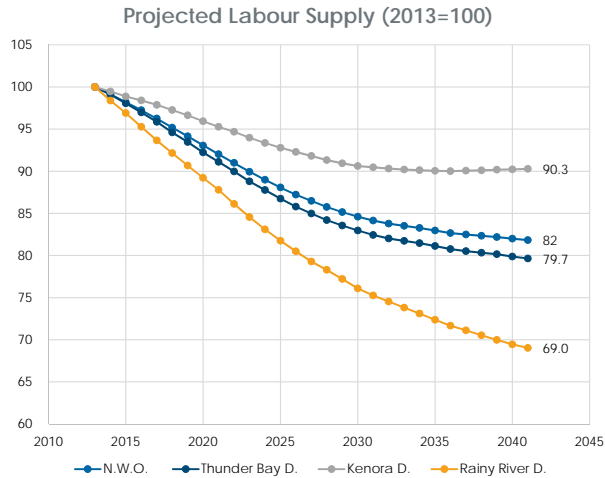
Health care and social services	2011-2020			2011-2030		
	Expansion Demand	Replacement Demand	Total	Expansion Demand	Replacement Demand	Total Demand
Professional occupations (except nursing)	423	950	1,373	1,119	2,100	3,219
Family physicians	82	270	352	219	470	689
Nursing occupations	828	1,780	2,608	2,198	4,375	6,573
Technical occupations	722	1,090	1,812	1,910	2,970	4,880
Assisting occupations	627	875	1,502	1,657	2,870	4,527
Total	2,682	4,965	7,647	7,103	12,785	19,888
Percentage demand (%)	35%	65%		36%	64%	

Trades	Replacement Demand	
	2011-2020	2011-2030
Industrial, electrical and construction trades	3,560	11,700
Maintenance and equipment operation trades	3,070	10,415
Other installers, repairers and servicers and material handlers	470	1,630
Transport and heavy equipment operation and related maintenance occupations	4,720	13,640
Trades helpers, construction labourers and related occupations	690	2,290
Total	12,545	39,715

Source: NPI calculations based on Statistics Canada.

Will there be workers?

* NE in progress



Source: Moazzami, Bakhtiar. 2015. "Northwestern Ontario Districts." Unpublished manuscript. Thunder Bay: Northern Policy Institute.

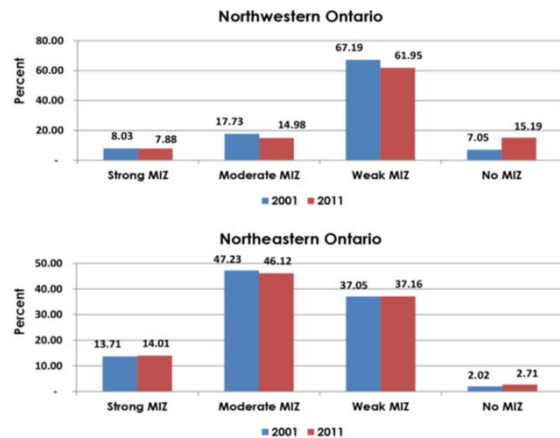
Northeast outperforms Northwest

- Educational attainment for the Aboriginal population is much higher in the NE than the NW.
- Average income for everyone is higher in the NE than the NW.
- Dependency on government transfers is lower in the rural NE than in the rural NW.
- Participation rates are higher and unemployment rates lower in the very rural and remote parts of the NE than in the NW.
- There is a higher percentage of rural income earners in the NE than the NW (more people have jobs).
- There is greater economic activity in strongly rural areas in the NE than the NW.

Why? Think CONNECTIVITY

Source: *It's what you know (and where you can go)*. Northern Policy Institute 2015

Connectivity – Northeast grid versus Northwest spines



Consistent Primary Data Collection

- Northern Surveys Project
 - Consistent data collection tools across the north (municipalities, chambers, other?)
- Working with LEPCs
 - Employerone – local labour demand
 - Vicinity Jobs - local labour demand
 - Magnet – local labour supply
- Working with United Way
 - Benchmarking progress against racism and exclusion

What is a “Community Data Consortium”?

- Legal group of organisations focused on the implementation of a public service goal
- Established at the community level
- Multi-stakeholder, multi-sector
- Comes together to acquire data
- Functions as a Community Development entity
- May include provincial government departments



Selection of data products from **Schedule B**

Organisation	Data product	Region Municipality Neighbourhood Blockface										
		CMA/CA	CD	CSD	Postal City	FSA	CT	DA	Rural PC	PC	Custom	
TransUnion	Credit Report Characteristics										✓	
Statistics Canada	Census Profile	📍	📍	📍		📍	📍	📍				✓
Statistics Canada	Census Topic-Based Tabulations	📍	📍	📍		📍	✓	✓				✓
Statistics Canada	NHS Profile	📍	📍	📍			✓	✓				✓
Statistics Canada	NHS Topic-Based Tabulations	📍	📍	✓			✓	✓				✓
Statistics Canada	Census/NHS Target Group Profiles	✓	✓	✓			✓	✓				✓
Statistics Canada	Census/NHS Custom Crosstabulations	✓	✓	✓			✓	✓				✓
Statistics Canada	Canadian Business Patterns	✓	✓	✓		✓	✓					
Statistics Canada	Taxfiler Data	✓	✓		✓	✓	✓		✓			
Citizenship and Immigration Canada	Permanent Residents Data Cube	✓	✓	✓								
Environics Analytics / Canada Post	Postal Code Conversion File ✖	✓									✓	
Environics Analytics	ENVISION CensusPlus ✖	✓	✓	✓			✓	✓		m	m	

📍 Free and open data ✓ Available through CDP m Modelled data

And more!

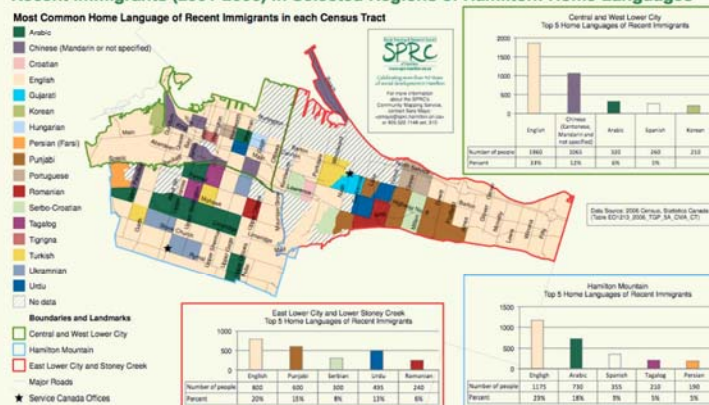
- Geocoded business listings (in negotiations)
 - Building Permits data
 - General Social Survey
 - Labour Force Survey
 - Uniform Crime Reporting Survey
 - Beyond 20/20 Professional Browser
 - Plenty of other datasets (see *Resources* section of communitydata.ca for more information)
- } smallest available geographies

Plus your recommendations!

Service needs assessment Hamilton, Ontario



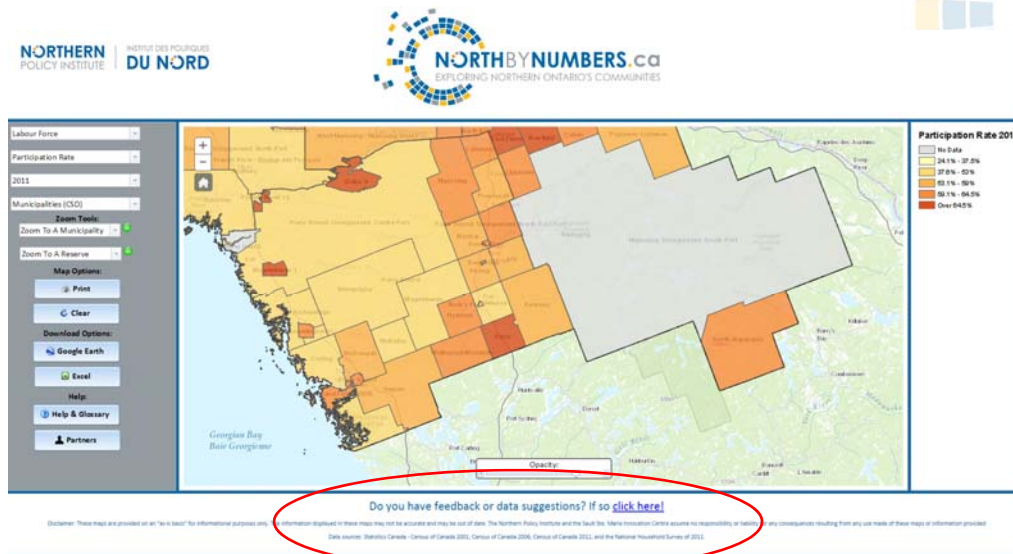
Recent Immigrants (2001-2006) in Selected Regions of Hamilton: Home Languages



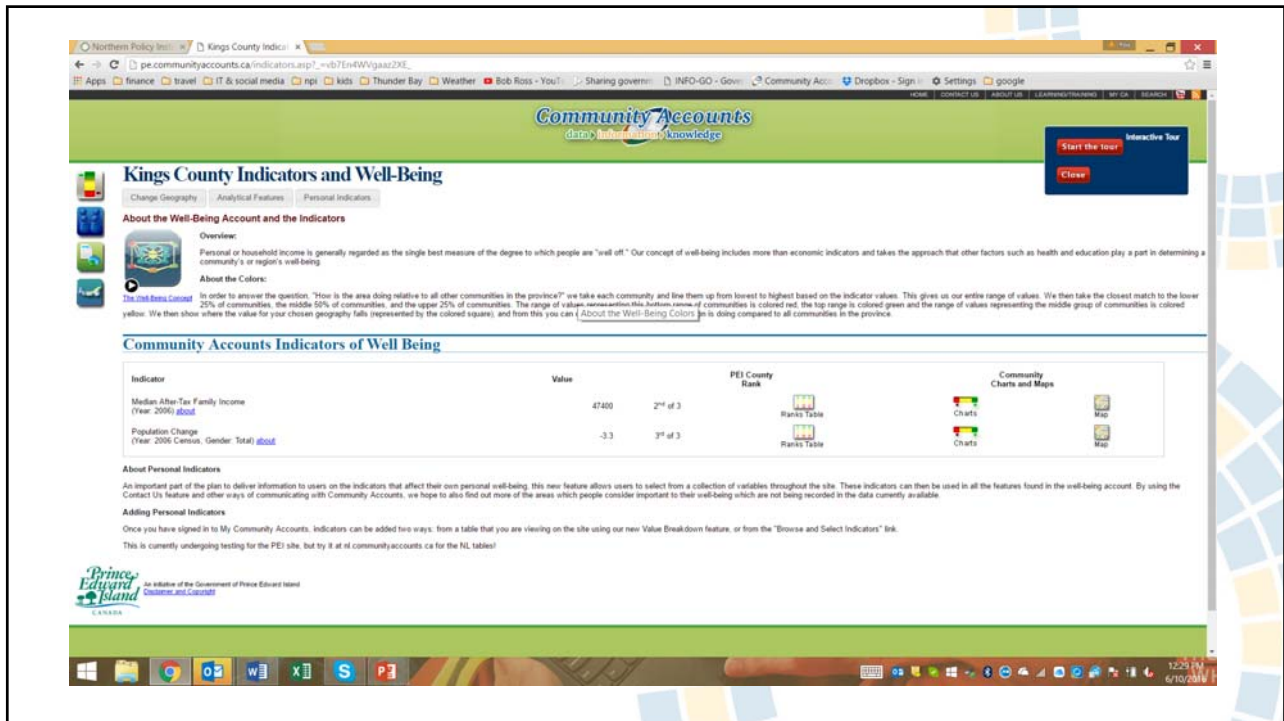
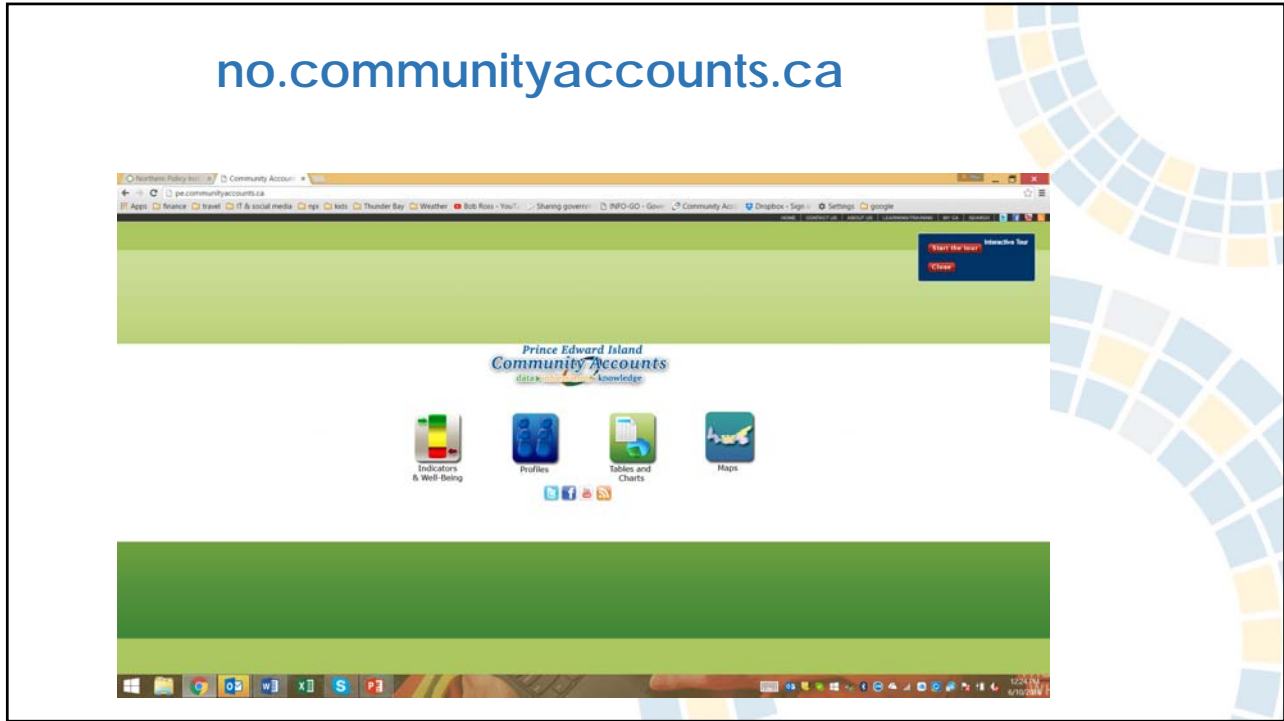
Enhancing Data Usage

- Data drill down
 - Ontario, Northern Ontario, NE/NW Ontario, Census Districts, Communities
- Labour Market 101
- Northbynumbers.ca “how to”
- No.communityaccounts.ca
- Northern Directions
 - Concordance analysis of community strategic plans
 - Alignment with internal capacity
 - Alignment with external realities

Any suggestions for other measures?

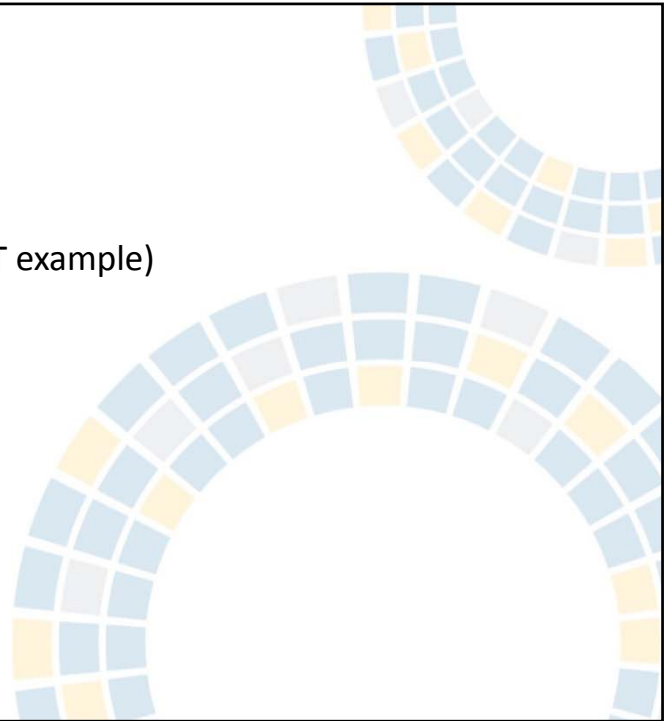


no.communityaccounts.ca



Partnering Opportunities

- Identification of key measures
- Data access and compilation (OcoT example)
- Northern data consortium
- Input into northbynumbers.ca
- No.communityaccounts.ca



Thank you. Merci. Miigwetch.

NORTHERN
POLICY INSTITUTE

INSTITUT DES POLITIQUES
DU NORD

www.northernpolicy.ca