

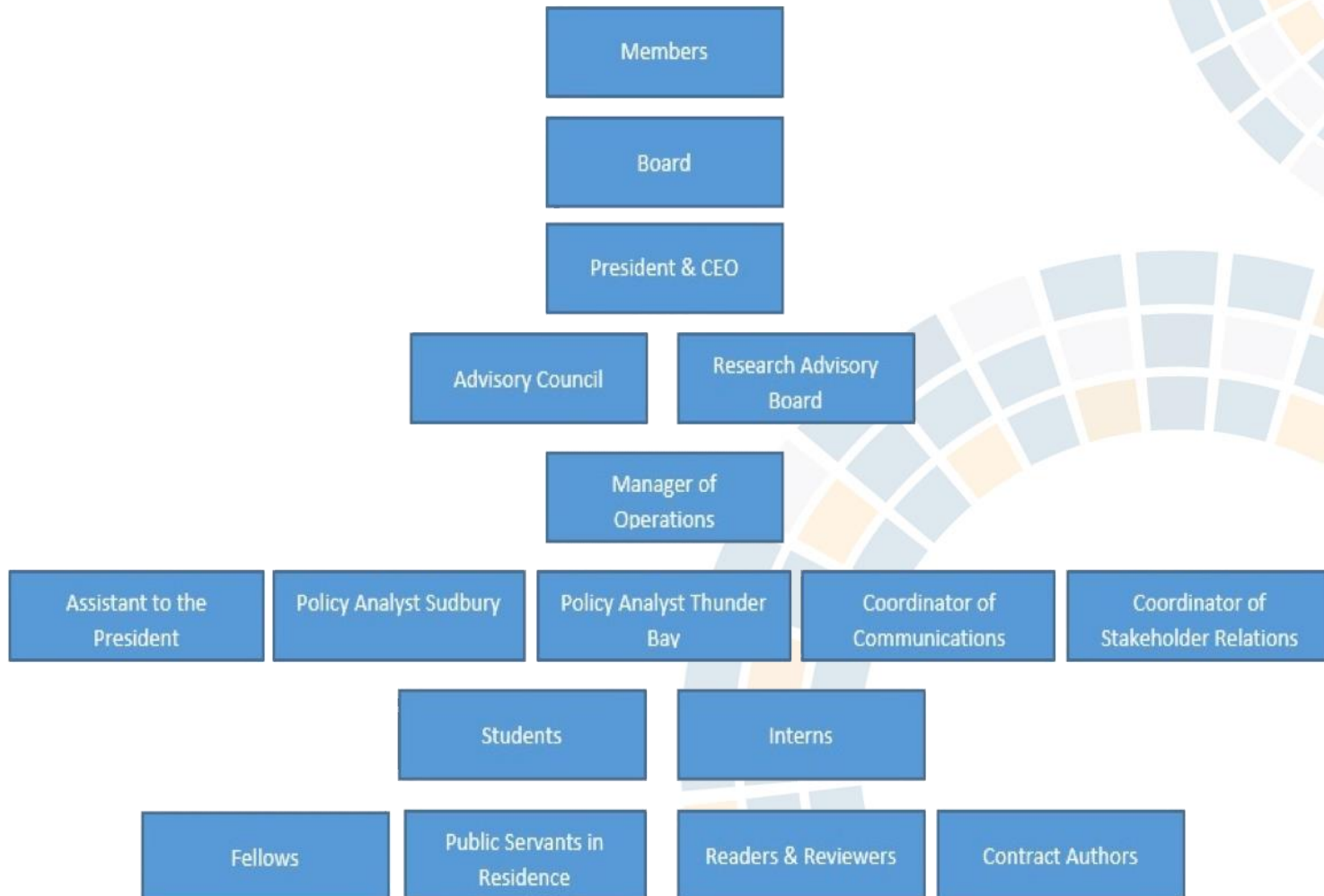
WORKING WITH
**NORTHERN POLICY INSTITUTE/
INSTITUT DES POLITIQUES DU NORD**

MNDM AREA TEAMS

SUDBURY (& SATELLITE LINKS) – 19 JUNE 2014



Key players INSIDE NPI

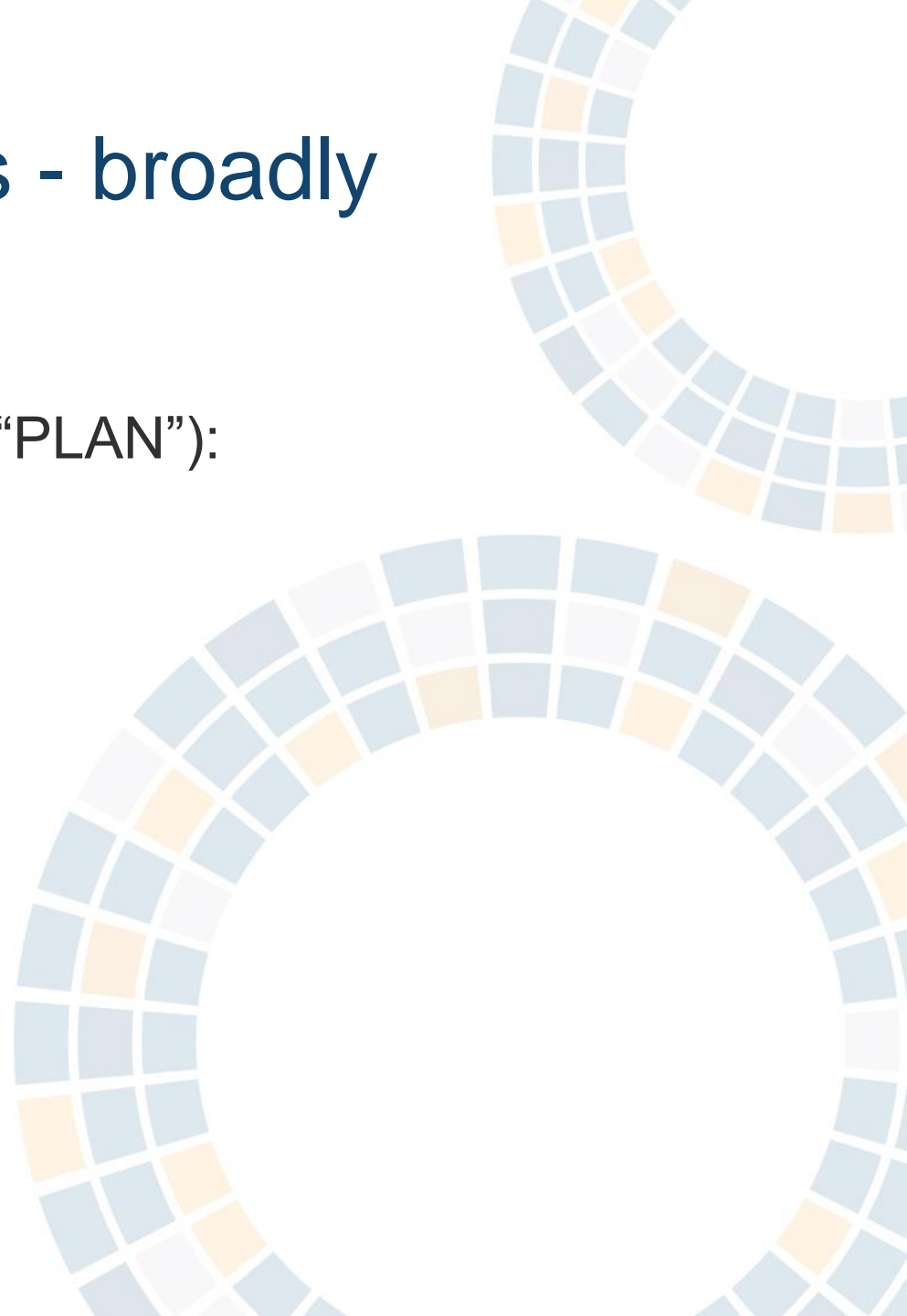


NPI Areas of Focus - broadly

Northern Growth

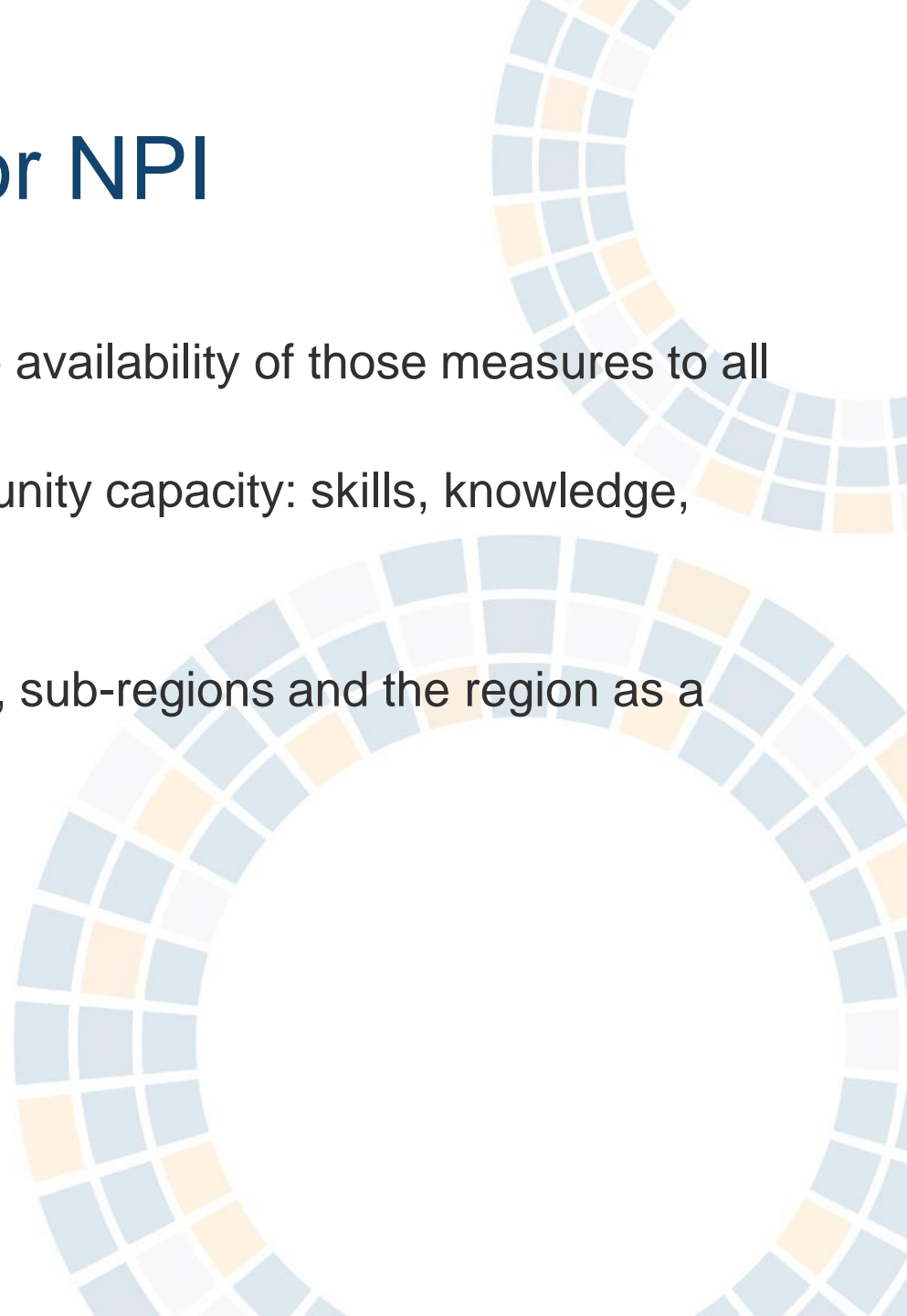
(note NOT Northern Growth “PLAN”):

1. Aboriginal peoples
2. Communities
3. Demographics
4. Economy
5. Environment
6. Infrastructure



Three Key Goals for NPI

- Enhance measurement and the availability of those measures to all stakeholders
- Building SUSTAINABLE community capacity: skills, knowledge, private capital
- Enhancing self-sufficiency
 - Of individuals, communities, sub-regions and the region as a whole



How do we choose projects?

Key questions:

Is it an important public policy issue?

- More on that in a minute

Can we make a difference?

- If everyone else is doing this work, we don't need to

Can we find the resources?

- Data, research capacity, funding

SECRET – fourth question

How NPI works WITH the Community



Three ways YOUR issue gets on OUR to-do list

1. Research if necessary:

NPI standing consultation tools will be used to inform, test and reset our internal research agenda and priorities. If your issue is shared by your friends and neighbours, it will likely get onto our to-do list.

2. But not necessarily research:

YOU do the work, commission the study, and you send it to us for re-publication or dissemination. Big parts of our job involve avoiding wasteful duplication of effort and getting the word out about what has already been done.

3. Working WITH NPI:

NPI is NOT a consulting service, but will partner – in cash, or in kind - to expedite needed work.

NPI Projects Commissioned (sample)

- Review of federal aboriginal education act
- Northern data bank – NOHFC, MNDM, FedNor, NODN, Norcat have ALL agreed to work with NPI to release as much data as possible (now working with Statscan and other local data holders)
- Land use planning driven locally and oriented to growth vs. driven centrally and oriented towards control
- Anti-poverty efforts – GAI vs. the min wage vs. other individual supports and interventions

RFPs in development (sample)

- Wealth transfer and “balance of payments” (update and analyze trends and any potential policy responses to “where the money goes”)
- Levels of service – NO vs. ON vs. other provinces
- Can you get there from here? Advantages and disadvantages of doing business in NO, and how to reduce/take advantage of them
- One size does NOT fit all - Unintended policy barriers of well intended policy meant for someone or somewhere else – but applied here “because that’s what the law says’

Projects under discussion (sample)

- Northern performance measures – community level
- Looking at the cost of smaller class sizes – sizes in line with the literature on 15 or fewer in early grades
- Looking at potential applicability and cost for Netherlands approach to community based elder care
- Potential framework for community development or benefits negotiations/agreements with proponents IN their community or IMPACTING their communities
- MANTARIO series (we need a better name) – we can't (or won't) be a province BUT can we be: free trade zone, special economic zone, special tax zone, signatory to New West Partnership

BEFORE you call us

There is a BIG difference between:

- “working WITH a Policy Institute” and “HIRING a consultant”

Independent means just that - look at terms of reference:

- “impact assessment of provincial owned and operated road to Ring of Fire” = consultant, decision pre-determined, decision based evidence seeking
- “assess WHETHER the province should own and operate a road to the Ring of Fire” = independent policy work, evidence based advice for decision making
- WWW.NORTHERNPOLICY.CA
- @NORTHERNPOLICY

Any questions?