



For Immediate Release

**Mapping the North: Northern Ontario Infrastructure now just a click away**

**June 28, 2016** –Northern Policy Institute is pleased to launch the *Northern Ontario Infrastructure Map*, an interactive tool that displays various infrastructure assets within Northern Ontario. According to map designer Julien Bonin, the purpose of the map is to have a detailed snapshot of the north's existing groundwork, in order to identify and build on regional strengths.

Available for everyone to use and explore, the new tool contains two dozen layers of displayable content, ranging from rail and road transportation networks to rest area facilities, population figures, and even carriers found at regional airports. With this fully interactive map, users are able to access as much or little information as they wish by adding or removing layers.

"This initiative aligns with our mandate to improve measurement in our region and build sustainable community capacity in Northern Ontario," says Northern Policy Institute President and CEO, Charles Cirtwill, "NPI encourages everyone to access the tool. More importantly we invite them to send us updates at [mappingthenorth@northernpolicy.ca](mailto:mappingthenorth@northernpolicy.ca) in order to enhance our collective understanding of the North."

Additionally, media layer features, which include Instagram and Twitter, allow users to explore the multimedia contributions from the public as they work and play across Northern Ontario. The *Northern Ontario Infrastructure Map* will be an ongoing and iterative process at Northern Policy Institute, which will continue to be updated as new data and information becomes available.

To start navigating your way through the *Northern Ontario Infrastructure Map* visit:

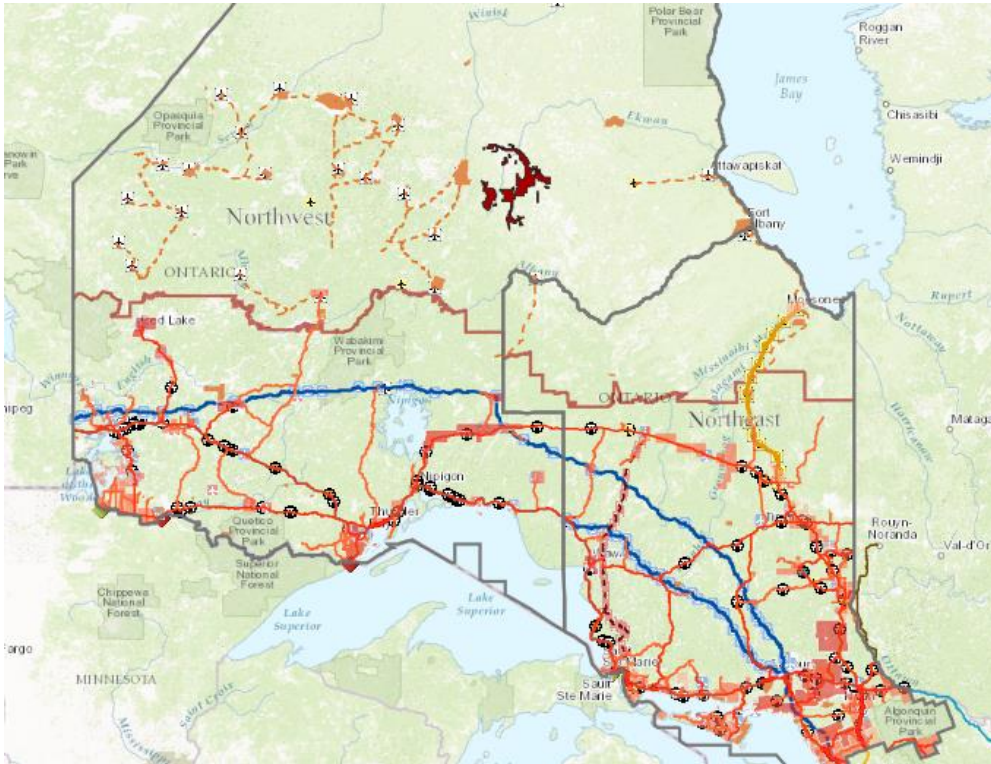
[www.northernpolicy.ca/maps](http://www.northernpolicy.ca/maps)

**Media Interviews:** Northern Policy Institute Research Coordinator, Dr. Mike Commito, is available for comment. To arrange an interview, please contact:

Katie Elliott  
Communications Coordinator  
705-542-4456  
[kelliott@northernpolicy.ca](mailto:kelliott@northernpolicy.ca)

**About Northern Policy Institute:**

*Northern Policy Institute is Northern Ontario's independent think tank. We perform research, collect and disseminate evidence, and identify policy opportunities to support the growth of sustainable Northern Communities. Our Operations are located in Thunder Bay and Sudbury. We seek to enhance Northern Ontario's capacity to take the lead position on socio-economic policy that impacts Northern Ontario, Ontario, and Canada as a whole.*



Northern Ontario Infrastructure Map [www.northernpolicy.ca/maps](http://www.northernpolicy.ca/maps)